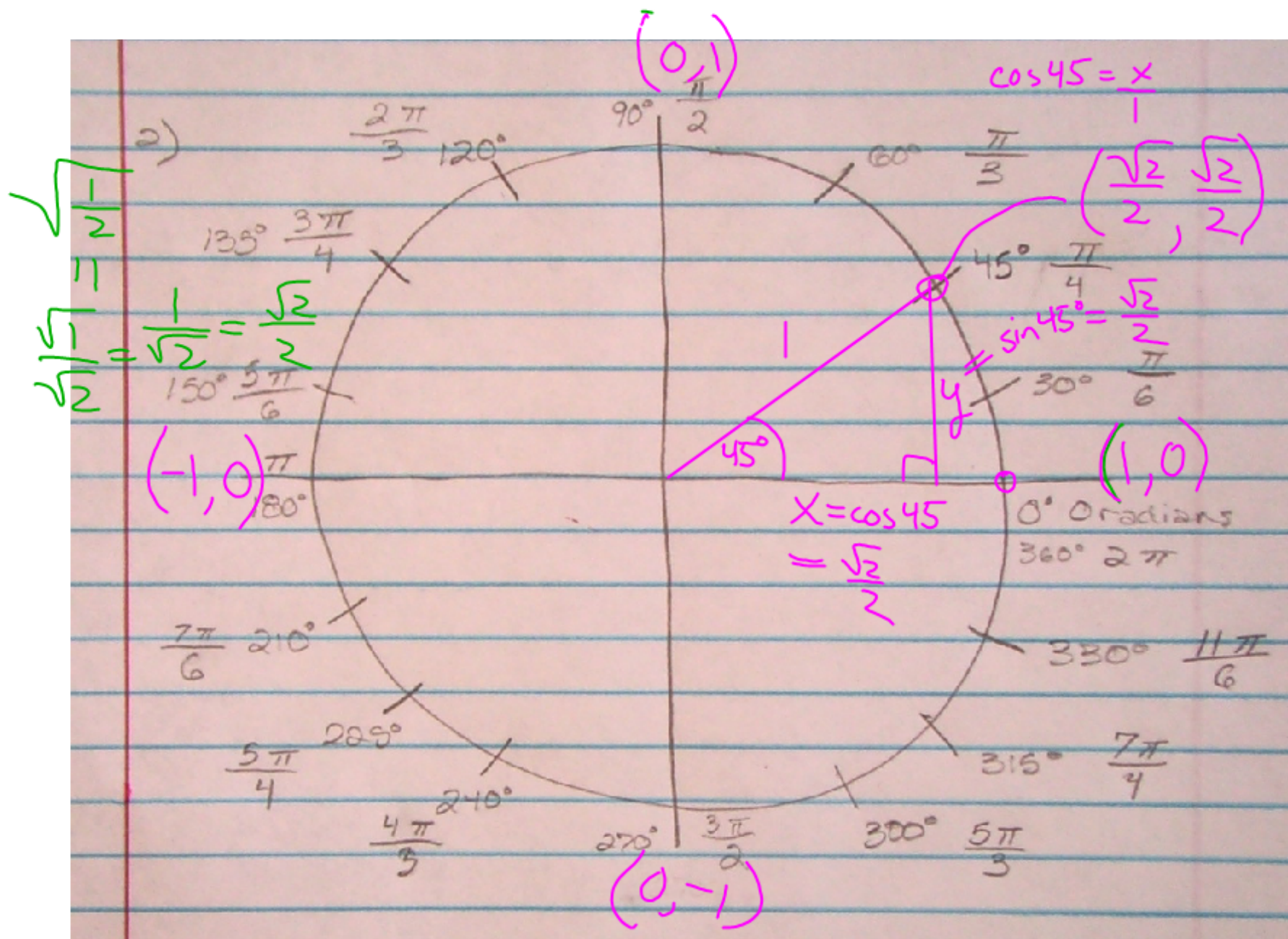


1) Find the *exact* values of the cosine, sine, and tangent functions for each angle. Rationalize and reduce when applicable.

	cosine	sine	tangent
a. 30°	$\frac{\sqrt{3}}{2}$	$\frac{1}{2}$	$\frac{\sqrt{3}}{3}$
b. 45°	$\frac{\sqrt{2}}{2}$	$\frac{\sqrt{2}}{2}$	1
c. 60°	$\frac{1}{2}$	$\frac{\sqrt{3}}{2}$	$\sqrt{3}$
d. 90°	0	1	undefined

2) Complete #75 on page 98 (make it BIG and take your time so that it is both neat and uncrowded).



Section 3.3: 1-6, 7-22(4), 23-34(4), 39-44(3), 47, 53, 54, 55-60(3)